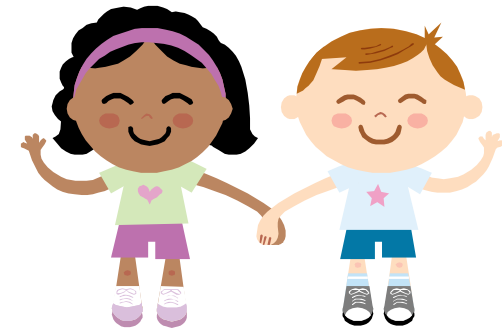


**Essex Child and Family Wellbeing Service**



**School Nurse  
Drop-in service**

No appointment necessary

Are you worried or have concerns  
about your child's health?

## Essex Child and Family Wellbeing Service

We offer support and advice on the following topics and any other health or developmental issues which may be concerning you.

- Continence problems
- Hearing tests
- Weight and dietary issues
- Sleep
- Behaviour
- General health concerns

**No appointment necessary**

**As this is a drop-in clinic we may limit the time to 15 minutes per child at busy times. For more in-depth problems please contact the service directly to speak to a member of the school nurse team.**

**0300 247 0013**

**Little Lions Children's Centre  
Northwick Park Academy  
Third Ave, Canvey Island, SS8 9SU  
Phone: 01268 683671  
3 - 4pm**

30th January  
6th February  
13th & 27th March

**Oak Tree Children's Centre  
Groveswood Primary School  
Grove Road, Rayleigh, SS6 8UA.  
Phone: 01268 775910  
3 - 4pm**

16th & 30th January  
20th February  
6th & 20th March

**Wishing Well Children's Centre  
Waterman Primary School  
The Boulevard, Rochford, SS4 1QF.  
Phone: 01702 541460  
3 - 4pm**

17th January  
7th February  
14th March

**Little Hand Prints  
Thundersley Primary School  
Dark Lane, Thundersley, SS7 3PT  
Phone: 01268 753557  
3 - 4pm**

25th January  
22nd February  
22nd March